

Tip of the Month !!

April, 2002

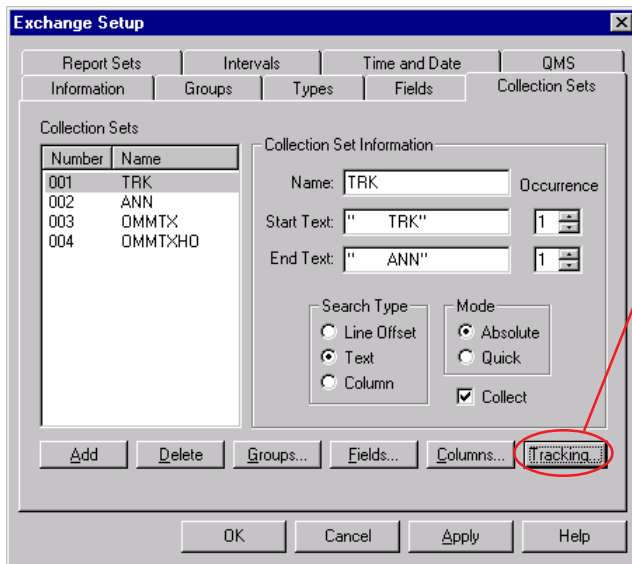
This is also located on the CBSi website!
 Download this and other Tips of the Month from
<http://www.cbsicom.com/products/tips.htm>

Trunk Group Tracking Feature in CTS Setup

The Trunk Group Tracking feature was added in version 8.00.00.

It allows you to run 2 new CTS Reports that will tell you of any new or changed trunk groups.

This is a great thing because if a new group appears in the data you are receiving from the switch, you don't have to comb through the raw data manually to find added or changed groups!

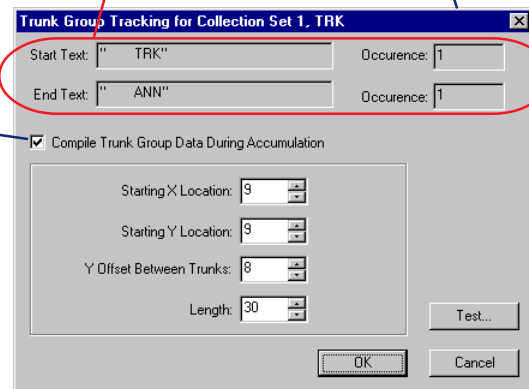


1. On the Collection Sets tab of the Exchange Setup, there is a **Tracking** button.

Click on Tracking button to bring up the Trunk Group Tracking for the selected Collection Set.

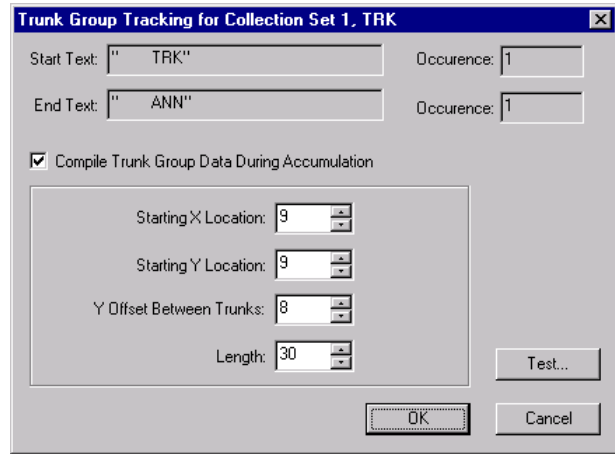
These fields are read-only and inherited from the previous screen's Collection Set Information area

2. Check the "Compile Trunk Group Data During Accumulation" checkbox. This needs to be checked to enable Tracking. Tracking works by collecting data off the first poll from the days specified when running the tracking report(s).



3. Fill in the **Starting X Location** box. This is determined by using a sample capture file that is open in CTS Editor. Place your cursor on the first line in the capture file that contains the Search Text (See the grey box below that says **X & Y Locations**). In this example, the cursor is placed at one space to the left of the first Search Text instance because later in the capture file, there are 3 digit numbers (i.e. 111) and that space will be filled.

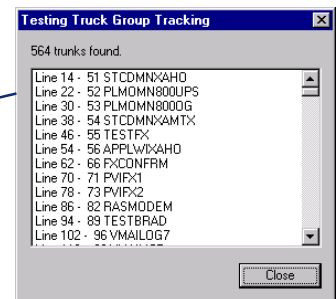
4. Fill in the **Starting Y Location** box. The Starting Y Location is the number of lines between the start text specified on the Collection Set tab, and the first occurrence of your Search Text. In this example, it is 9, because there are 9 lines from TRK to the first occurrence of our Search Text, 51 STCDMNXAHO.



5. Fill in the **Y Offset Between Trunks**. This is the number of lines between each group of Search Text. In this example, there are 8 lines between each instance of Search Text.

6. Fill in the **Length**. This example uses 30 to make sure that all the Search Text is captured.

7. Now press the **Test** button and browse to a capture file to test. Here is an example of a successful test.

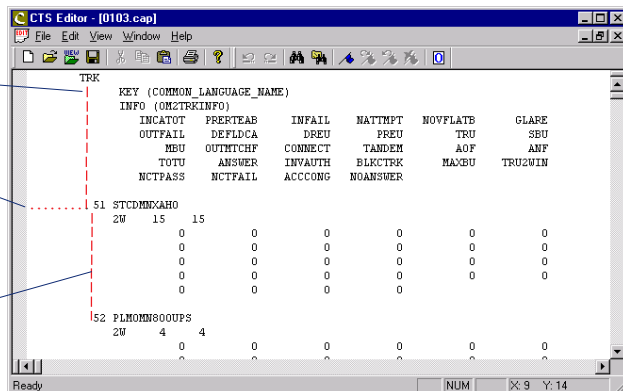


X & Y Locations

9 spaces down from the Start Text to line with the first Search Text

9 spaces across until the first X coordinate of the Search Text

8 spaces between each group of Search Text



Go to the **X & Y Location** in the Reference section of the CTS 2000 Setup Manual for more help.

8. After the Test works correctly, save the changes in Setup, then re-accumulate the Exchange for the days you would like to compare the trunk groups for.

9. Go to the CTS Reports and select the Misc tab. Under Tracking, there are 2 Tracking reports, T-2500 & T-2501. T-2500, Tracking Report, will give you a list of all of the existing Trunk Groups for the first polling day you selected. T-2501, Trunk Group Comparison report, will compare the first and last day that you selected.